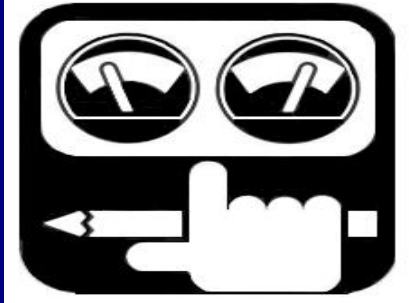




Engine – 2000 Hour Tune-up & Valve Adjustment



Features & Benefits:

- *Guaranteed price **
- *Reduced cost*
- *Extends hours to rebuild*
- *Reduced unscheduled downtime*
- *Maintain original performance specs*

Repair Indicators:

- *Engine hours*
 - *Engine performance*
 - *PM Schedule*
- Always repair before failure!*

Included in 2000 Hour Engine Tune-up:

- ◆ Clean engine.
- ◆ Per Komatsu maintenance recommendations, the following will be completed where required; rec-
- ◆ Check and adjust valve clearance.
- ◆ Check and adjust RPM's.
- ◆ Clean crankcase breather.
- ◆ Test fuel Injection nozzles (excludes 105, 110, N14, M11, K19 engines).
- ◆ Check blow-by.
- ◆ Check turbo end play.
- ◆ Check crankshaft end clearance.
- ◆ Lubricate belt tension pivot point.
- ◆ Check/tighten radiator hoses & clamps.
- ◆ Check/tighten engine mount hardware
- ◆ All seals & gaskets to complete tune-up.

Available at Additional Cost:

- Repair / replacement of fuel lines and hardware.
- Fuel injection nozzles.
- Any Repair or service not listed.
- 250 Hour PM.
- 500 Hour PM.
- 1000 Hour PM.
- 2000 Hour PM.

Model:
